



Medicine Hat, Alberta  
Canada

# Where is Medicine Hat?





# A Few Facts

## Canada

- Land mass: 9.985 million km<sup>2</sup> (3.8 million miles<sup>2</sup>)
- Population: 40 million

## Alberta

- Land mass: 661,848 km<sup>2</sup> (255,541 miles<sup>2</sup>)
- Population: 4,647,178
- Motto—Fortis et Liber—"Strong and free"
- Capital—Edmonton
- Flower—Wild Rose
- Tree—Lodgepole Pine
- Bird—Great Horned Owl
- Mammal—Rocky Mountain Bighorn Sheep
- Fish—Bull Trout
- Stone—Petrified Wood
- Grass—Rough Fescue
- Gemstone--Ammolite

## Medicine Hat

- Population: 63,271 (2021 Federal census)
- Area: 112 km<sup>2</sup> (43.26 sq. miles)
- Sunshine: 330 days makes us "Canada's Sunniest City"
- Also known as the "Oasis of the Prairies"
- Located at the crossroads of the TransCanada Highway and Highway 3, Medicine Hat is the major eastern gateway to Alberta's industrial corridor.
- Approximately 3 hour drive to Calgary, 5½ hour drive to Edmonton, 2 hour drive to Lethbridge and 1½ hour drive to the United States border.
- The name "Medicine Hat" is the English translation of the native word "Saamis" which means medicine man's hat. A number of legends tell how the city was named.



# Medicine Hat Friendship Force

- The Medicine Hat Chapter of the Friendship Force was chartered in April 2003.
- We have 33 members, some who were instrumental in founding the club.
- The Club starts the program with a welcome supper. Depending on the time of year, the club coordinates various tours with the City and surrounding area, as well as hosting mix and match suppers. The program ends with a farewell supper.
- The strength of our club is that many members participate and contribute to the success of the program. As some of our members take part in all of the activities there is ample opportunity to meet club members.



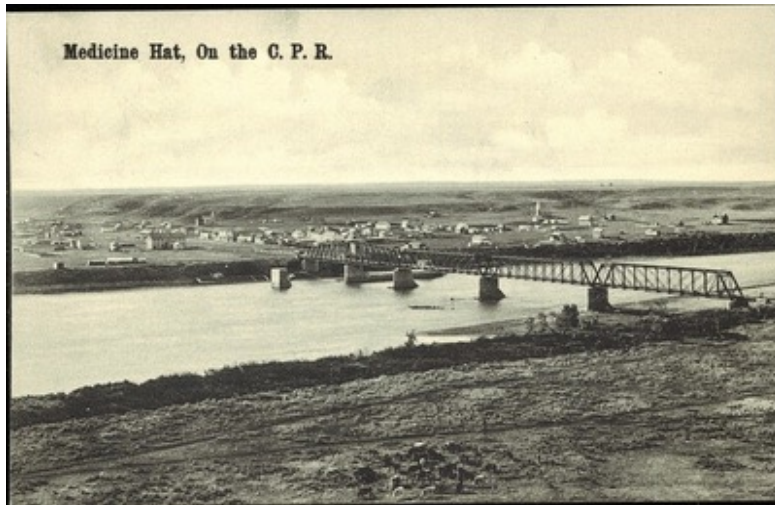
# Alberta Friendship Force Clubs

- Edmonton
- Calgary
- Lethbridge
- Medicine Hat

# Medicine Hat History

- Prior to the construction of the Canadian Pacific Railway several bands of Blackfoot, Cree and Assiniboine people were known to have utilized the resources afforded by the shelter of the South Saskatchewan River valley.
- The Canadian Pacific Railway reached Medicine Hat in 1883. The CPR established this as a divisional point as Medicine Hat is halfway between Winnipeg and Vancouver.
- Along with the railroad came the Northwest Mounted Police.
- Medicine Hat was founded in 1883 and became a city in 1906.
- In the latter part of 1903, City Council embarked on a program to supply all residents with gas, the beginning of a City-owned utility.
- In 1889 Medicine Hat built the first hospital west of Winnipeg.

# Historic Medicine Hat

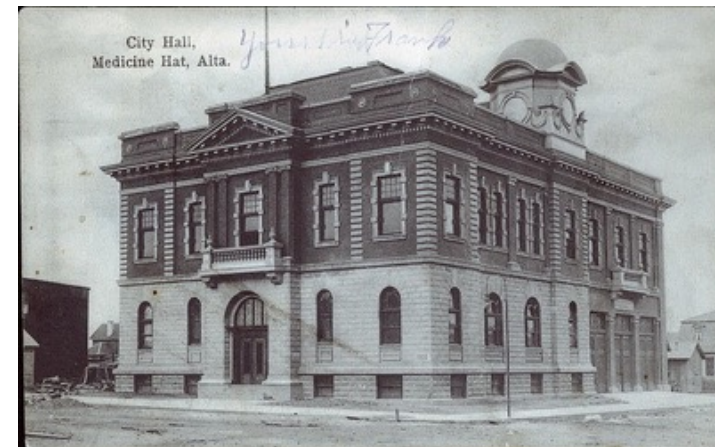
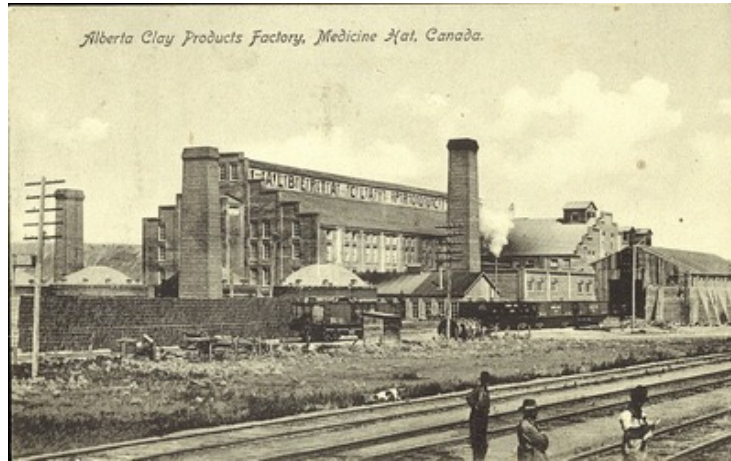




# History -- continued

- The area around Medicine Hat, a city in southeast Alberta known for its natural gas reserves, was described as having “all hell for a basement” by the writer Rudyard Kipling after his visit in 1907.
- The Medicine Hat Regional Airport’s current configuration was initially established by the Department of National Defence. It was originally set up as a Commonwealth Air Training Base and opened March 14, 1941. The #34 Service Flying Training School trained over 3000 airmen during the three and a half years the school was in operation. In 1947, the Department of National Defence transferred ownership of the airport to the City of Medicine Hat.

# Historic Medicine Hat



# History -- continued

- Rich in natural resources including natural gas, coal, clay, sunshine and farmland, the town became industrialized and was known in its early days as the “Pittsburgh of the West”.
- Some of the large industries located in Medicine Hat were coal mines, brick works, flour mills, pottery and glass manufacturing plants.
- The agricultural potential of the surrounding area, both in crop and livestock, also made the town a viable service center with a well-established transportation route.
- There was an economic boom from 1909-1914. With the advent of World War I and II, Medicine Hat’s growth sharply declined, and it was not until the 1950’s that there was again commercial growth.
- During World War II, one of the largest prisoner-of-war camps in Canada was established in Medicine Hat. It was used primarily to hold German and Italian prisoners.



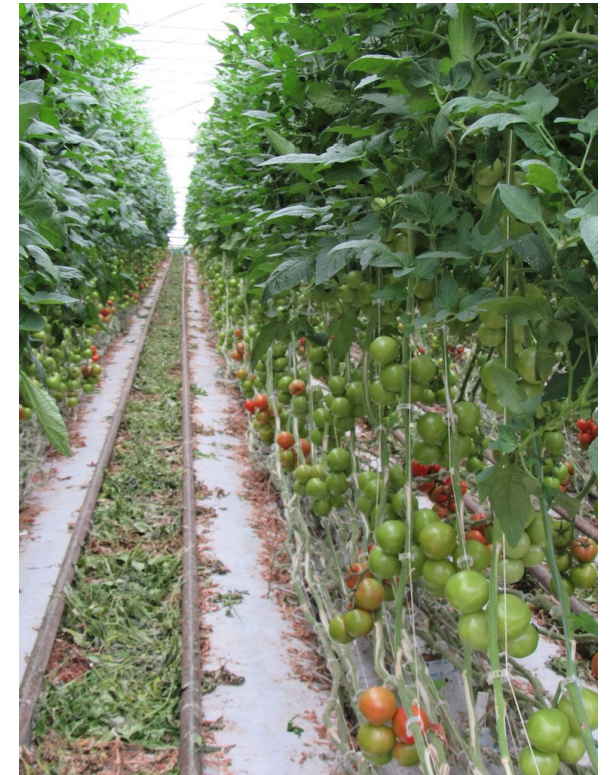
# Present Day

- In the 21<sup>st</sup> century there are major industries including, chemical plants, a Goodyear tire and rubber plant, greenhouses, numerous oil and gas related companies.
- Petrochemicals capacity includes methanol and nitrogen fertilizers.
- Medicine Hat owns its own gas utility and power generation plant.
- The Hut 8 Bitcoin mine is part of the city's push to diversify its economy. Hut 8 will branch out into mining cryptocurrency other than bitcoin.
- Cryptocurrencies like Bitcoin rely on mining to secure transactions. "Mining" in this context does not mean digging for minerals, but using computers to add groups of Bitcoin transaction records, known as blocks, to a ledger shared by computers around the world, or a blockchain.

# Present Day -- continued

- Medicine Hat and region is home to Canada's largest irrigation district and Alberta's largest greenhouse cluster, the fourth largest in Canada.
- Greenhouses grow cucumbers, tomatoes, peppers, eggplant, lettuce and more.
- St. Mary's River Irrigation District is Canada's largest irrigation district with 2,060 km of canals and pipelines to approximately 372,000 acres of land south of the Oldman and South Saskatchewan Rivers between Medicine Hat and Lethbridge.
- The Medicine Hat region produces a variety of pulses, dry field peas, chickpeas, lentils, dry white beans, and other dry beans.
- Medicine Hat and region is Alberta's number one producer of lentil and chickpeas.
- Medicine Hat and region is home to 65% of Canada's irrigated land base.

# Irrigated farmland, greenhouses, packing plant



Red Hat Co-operative



# Present Day -- continued

- Along with the standard cereal grain crops and livestock farmers are branching out into other crops such as: potatoes, hemp, peas, lentils, beans, spearmint, peppermint, dill, coriander and sugar beets.
- Dale Thacker Specialty Crops, located near Bow Island, grow spearmint which they distil into pure spearmint oil all of which is destined for toothpaste and chewing gum industries. Dale Thacker and his brother along with 2 neighbours account for “about a third of all the spearmint grown in North America”. They also grow and distil dill and peppermint.
- Medicine Hat has the longest growing season in Alberta at over 188 days on average.
- Alberta is the largest honey-producing province in Canada. Alberta produces approximately 40% of Canadian honey.

# Present Day -- Build, Test, Fly

- Medicine Hat is a strategic location for military and defence Contractors, and companies operating in the fast-growing Unmanned Aerial Vehicle (UAV) sector.
- Medicine Hat-based aerospace and defence companies are strategically positioned between Canadian Forces Base Suffield, Defence and Research Development Canada, and Canada's first Transport Canada-approved beyond-line-of-sight UAV range.
- Foremost UAS Range is Canada's only BVLOS restricted airspace located approximately 100 km Southwest Medicine Hat in Foremost, Alberta. The range made Canadian aviation history on February 24, 2017 when the first BVLOS test range took place. The 2,400 square kilometres of controlled airspace provides companies with the ability to test technology.

# Unique Attractions

## Saamis Tepee

- Built entirely of steel, 20 stories high, the Saamis Tepee stands along the Trans-Canada Highway as a monument to the Indigenous people of North America.
- Artwork on storyboards, incorporated into the design, depicts the history of the Indigenous people of North America.
- The tepee was constructed in Calgary for the 1988 Olympics. It was then moved to its present site in Medicine Hat.





# From Tourism Medicine Hat

## **MIYWASIN STORY TOUR**

- Experience Medicine Hat's indigenous history through our local guide's eyes. An integral part of the preservation and expression of culture in indigenous communities woven with social, and political commentary.

## **Metis Community in Saratoga Park**

- The original Metis community in Medicine Hat is now part of the trail system, and is lush with chokecherries. Walk with us as we share the land and tell its stories.

## **Miywasin Friendship Centre**

- Join in a hands-on, elder lead cooking experience of delicious traditional foods such as Bannock with chokecherry jam, a cultural icon. Intimate conversation guaranteed.

# Stations of the Cross

- The Stations of the Cross Murals made from sculpted brick are the work of James Marshall, a Medicine Hat artist. Many more of his brick murals are found in Medicine Hat and in other parts of the world as far away as Japan and Siberia. James Marshall is also known for his pen and ink drawings of Medicine Hat and other parts of Alberta.



# City Hall

- Medicine Hat's award winning City Hall, very modern in its architecture, was completed in 1983. In 1986, it received the Governor-General's Medal for Architecture. The City Hall is situated on the banks of the South Saskatchewan River. On May 6, 2006, Medicine Hat celebrated the 100<sup>th</sup> anniversary of being incorporated as a city.



# Archaeological Sites

## **Saamis Archaeological Site**

- Below the Saamis Tepee, in scenic Seven Persons coulee, lays one of the Northern Plains archaeological sites - the Saamis Archaeological Site.
- It boasts one of the foremost important archaeological sites of the Northern Plains.

## **The “Stampede Site”**

- An archaeology project began here in the 1970's at the stampede site near the Elkwater townsite. It reveals human habitation of the hills for more than 8,500 years. A display in the visitor centre highlights the archaeological peel that was removed from the site.



# Museums

## Medalta

- Huge and intriguing machines and a memory-filled atmosphere invite visitors to the historic factory complex.
- Celebrating over a century of ceramics, this historic industrial district offers a dramatic look at the factories that once made Medicine Hat the pottery centre of Canada.
- The Medalta International Artists in Residence Program is designed to serve artists at all stages of their careers.
- This provincial historic site includes: scheduled site tours, children's programs, and gift shop.



# Museum and Cultural Attraction

## Esplanade Arts & Heritage Centre

- The Esplanade was built in 2005 as one of Alberta's Centennial Legacy Projects.
- The Esplanade features a world-class 700-seat performing arts theatre, discovery centre, museum, art gallery and archives.
- It is home to more than 25,000 artifacts.



# Outdoor Fun -- Parks

- Medicine Hat has 147 parks including 115 km of hiking/biking trails and 250 hectares of parks. Pick up a map of the Heritage Trail System.
- Free-to-borrow bikes are available at the Visitor Information Centre.

## **Police Point Park**

- It once was the location of a Northwest Mounted Police outpost, the park is now the place to view nature. The Cottonwood “giants” are thought to be 200 to 300 years old. There is also a Nature Centre.

## **Lions Park**

- A classic picnic park with broad areas of shady grass, a ball park, playground and horseshoe pits

# Parks -- continued

## **Kin Coulee Municipal Park**

- There are over 100 acres of open space. It is Medicine Hat's most popular picnic area. You'll find an impressive skateboard park, playgrounds, fire pits, beach volleyball area, paved trails, ball diamonds and band shelter. In the winter the toboggan hill is very popular and the large firepit provides cheery warmth from the cold.

## **Strathcona Island Park**

- Highlights of the park include the playground and waterpark along with many kilometers of paved walking and biking trails along the river and in among the trees. Picnic areas, barbecue pits, boat launch and breathtaking view points.



# Parks -- continued

## **Echo Dale Regional Park**

- The largest of Medicine Hat's parks, is located a short distance west of Medicine Hat along the South Saskatchewan River. The park has two man-made lakes: one for swimming and one for paddle boating and fishing. Two beach volleyball courts and many picnic spots with fire pits are available. There are also many kilometers of hiking trails through the coulees, one of which leads to the Gas City Campground.

## **Riverside Veteran's Memorial Park**

- Across from City Hall, this park is often used for official functions as well as a location as a festival space. A band shelter contains a brick mural created by Jim Marshall. This mural, one of many created by Jim, is a detailed portrayal of Medicine Hat's history. The park has a Cenotaph, two CPR locomotives and a World War II Sherman tank.

# Outdoor Fun -- Golf

- There are many area golf courses to enjoy during your stay in Medicine Hat. Medicine Hat offers golfers breathtaking scenery with unforgettable courses for both expert and novice players. Golfing in Medicine Hat often offers many glimpses of wildlife in the area, and many of the courses are built around the streams and rivers that flow through the city.
- Connaught Golf Club – Par 72 Championship Golf Course
- Cottonwood Coulee Golf Club – 18 hole Executive Par 4 Course
- Medicine Hat Golf & Country Club – Par 72 Championship Golf Course
- Paradise Valley Golf Course – 18 hole Par 3 format
- Desert Blume Golf Club – 18 hole World-Class Golf Course
- Riverview Golf Club in Redcliff, AB – 18 holes – all levels of golfers

# Recreation

- There are many recreational facilities in and around Medicine Hat.
- The City operates 5 indoor ice surfaces. There is also an outdoor rink program during the winter.
- There are 2 campgrounds.
- There are 2 indoor and 2 outdoor pools. Echo Dale also allows swimming.
- There are several sports fields at the Family Leisure Centre including: a Football Field, 4 Slow Pitch Diamonds, 3 Soccer Pitches.
- The Moose Community Ball Complex has 4 Slow Pitch Diamonds.
- Inland Skateboard Park
- There are several tennis courts available at various locations in the city.
- There are 4 water playgrounds.



# Other Things To Do

- Markets
- Skateboarding
- Geocaching
- Giant chess set by City Hall
- Escape Rooms
- Disc golf—3 courses
- Fishing
- Cycling/Hiking—incredible paved and single track trails
- The Sunshine Trolley is a great way to see Medicine Hat.
- JazzFest
- Tongue on the Post folk festival





# Local Favourites

(Listed on Tourism Medicine Hat)

- John's Butterfly House
- Canadian GunHub
- Dunmore Dugout
- Hooplas Mini Golf



# Dining, Coffee, & Nightlife

(From Tourism Medicine Hat)

## Food

- Medicine Hat is a hub of culinary experiences.
- Check out “food & drink” on the Tourism Medicine Hat website <https://www.tourismmedicinehat.com/experience/food-drink>
- Check out the Experience Guide from Tourism Medicine Hat
- <https://tourismmedhat.cld.bz/Experience-Guide>
- With our FIVE independent coffee shops creating espresso, lattes, incredible tea selections and so much more! There is a drink for everyone there. Then head to one of our incredible craft breweries to try some delicious beer.

# Medicine Hat Exhibition & Stampede

- Established in 1887, the Medicine Hat Exhibition & Stampede Company has grown from a rodeo to a culture & heritage mecca in south east Alberta.
- The Medicine Hat Exhibition & Stampede is a volunteer community service organization, established to provide the City of Medicine Hat and District with programs, events and facilities.
- Events include: Spring Indoor Rodeo, World Professional Chuckwagon Racing, Stampede in July, All-Breed Horse Show, Stampede Summer Jam, Olde Tyme Christmas Fair, Christmas Farmers' Market and the Beef Pen Show & Cowboy Christmas tradeshow.
- There are 10 facilities available for rent that are suitable for various functions.



# Education

- Medicine Hat Public School Division is comprised of 11 elementary schools; three middle schools (including one with a Christian Education focus); and three high schools (one offering Distance Education). As well, a variety of alternative educational programs are available through the Medicine Hat Outreach School.
- Medicine Hat Catholic Board of Education is comprised of six elementary schools; two middle schools, and one high school and an International Program.
- There are two Christian Schools.
- Medicine Hat College has a variety of certificate, diploma, degree, university studies, and trades programs. Many International students attend MHC. MHC also offers Continuing Studies which are non-credit courses. Some of these courses are offered online.
- Cypress College is a Business Career College based in Medicine Hat, Alberta with an additional campus in Brooks. It offers diploma programs in Administrative Technologies, Computer Technologies, Business Management, Marketing & Communications, Hotel and Restaurant Management and Culinary Arts Certification.
- Academy of Learning Career College Medicine Hat is a private career college.



# Nearby Attractions

## **Cypress Hills Interprovincial Park**

- Canada's first and only interprovincial park straddles the Alberta-Saskatchewan border, just 70 km southeast of Medicine Hat. It covers 2500 sq km in the two provinces, and is the highest point (1,466 metres above sea level) between Banff and Labrador. The Cypress Hills are unique in that they were not glaciated during the last ice age; the park's montane environment is an oasis of mixed & lodgepole pine forests in the midst of the Canadian prairies. Diverse wildlife, including 215 species of birds and over 18 species of orchids can be found throughout the park. An active archaeological dig-site has revealed a 7000 year old, First Nations encampment.



# Nearby Attractions -- continued

## Fort Walsh

- Established in 1875 Fort Walsh would quickly become the most important, largest and most heavily armed fort the North West Mounted Police garrisoned during their early years in the West. *Fort Walsh National Historic Site of Canada has been commemorated because the fort served from 1878 to 1882 as the headquarters of the North West Mounted Police; and the fort played a key role: in imposing Canadian law from 1875 to 1883; in implementing Canada's Indian policy; and in supervising the Lakota who fled to Canada under Tantanka Iyotanka (Sitting Bull) after the Battle of the Little Big Horn.* This former North West Mounted Police/Royal Canadian Mounted Police post (circa 1878-83) was later used (1942-68) to breed horses for the force and the Musical Ride.





# Nearby Attractions -- continued

## Dinosaur Provincial Park

- Some of the most extensive dinosaur fossil fields in the world are found here; the area badlands & cottonwood river habitat are the other significant features that resulted in the park's designation as a UNESCO World Heritage Site in 1979. Strange land formations rise up on all sides, sculpted by wind and water into hauntingly beautiful shapes sunbathed in terra cotta, bronze and amber.



# Nearby Attractions -- continued

## The Royal Tyrrell Museum

- Set in the Alberta badlands, The Royal Tyrrell Museum opened in 1985. The Museum is in the heart of the badlands, 6 km northwest of Drumheller, Alberta, in Midland Provincial Park. The Royal Tyrrell Museum celebrates the long history and spectacular diversity of life -- from the tiniest grains of pollen to the mightiest dinosaurs. People come to experience the power and excitement of some of the most remarkable fossil displays anywhere in the world, in Canada's only institution devoted entirely to palaeontology.



Travel Alberta



# Nearby Attractions -- continued

## Writing-on-Stone Provincial Park

- Writing-on-Stone is a sacred landscape that has special spiritual significance to First Nations people; specifically the Blackfoot people, who hunted and travelled these Great Plains for generations. Archaeological studies from the prairies around Writing-on-Stone / Áísínai'pi show that people have lived here for at least 10,000 years.
- There are over 50 petroglyph sites and thousands of works.
- <https://albertaparks.ca/parks/south/writing-on-stone-pp/>
- <https://albertaparks.ca/media/6496416/wos-hoodoo-trail-guide-booklet.pdf>



Travel Alberta



Alberta Parks

# Nearby Attractions -- continued

## Etzikom Museum and Historical Windmill Centre

- Located on the Red Coat Trail, the Centre features outdoor restored examples of windmills encompassing over 200 years of Canadian wind power (particularly water pumpers). Indoors at the Museum are many “hands-on” displays in time-period settings, featuring early pioneer life. Other displays include: Indigenous artifacts, fossils, petroglyphs, Homesteader tools and a Historic Church.



Tourism Medicine Hat



# Nearby Attractions -- continued

## Red Rock Coulee

- Red Rock Coulee Natural Area is 324 hectares of eerie badlands, hoodoos and, the most striking feature of this landscape, large, round, red boulders. Measuring up to 2.5 metres in diameter, these boulders are actually sandstone concretions believed to be among the largest in the world.



# Nearby Attractions -- continued

## Brooks Aqueduct

- Completed in 1914 by the Canadian Pacific Railway's irrigation division it was a vital link in its expansive irrigation network. The Brooks Aqueduct spans a shallow 3.2 km wide valley, suspending a concrete sling 20 meters above the parched prairie landscape. Once filled overflowing with precious water bound for the thirsty croplands of southwestern Alberta, today it holds only memories.



Travel Alberta



# Prairie Gleaners

- This is a non-profit registered charity, existing to support Christian Missions and Aid organizations in the world. Ever aware of the overabundance of resources within our nation of Canada, the Prairie Gleaners Society exists to help support resource poor communities through the processing and packaging of food, materials and supplies that have been gleaned (to glean means to gather and pick up that which is left). Working in partnership with established mission and aid organizations, the produce and materials will be transported to different parts of the world, as well as within Canada, and distributed by established relief and development programs for the homeless and hungry.
- The produce is from very generous greenhouse owners/operators and farms in Southern Alberta.



One bag will feed 130 people.



Trays ready for dryer.

# For Further Information

- Tourism Medicine Hat  
<https://www.tourismmedicinehat.com>
- City of Medicine Hat  
<https://www.medicinehat.ca>
- Travel Alberta  
<https://www.travelalberta.com/ca/>
- Alberta Parks  
<https://albertaparks.ca>
- <http://www.prairie-towns.com>